

# Copper Aluminium Bi-Metal Terminal Lug

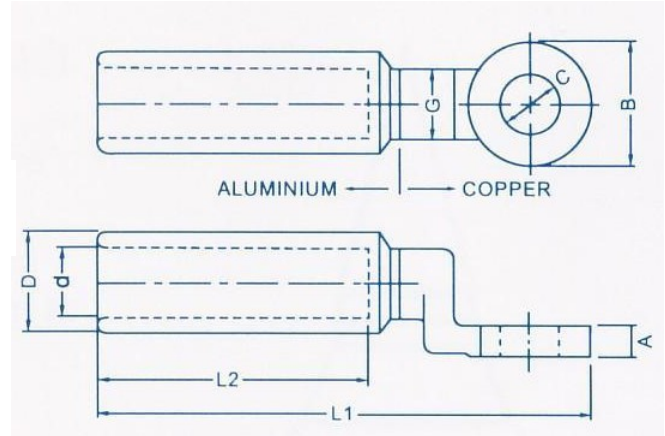
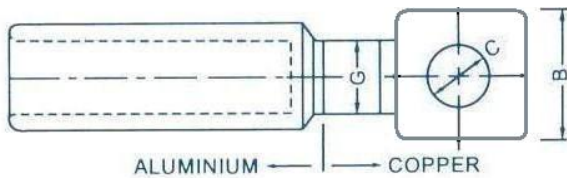
Manufactured from Solid Aluminium and Solid Copper, Friction Welded

For Hexagon Die and Indent Die

Copper : E. Cu 99.9%

Aluminium: AL 99.5%

All lugs are pre-filled with jointing compound, plugged and individually labeled.



For C500 & C630

Tested to IEC 1238-1:1998

| Catalogue No. | L1  | L2 | D  | d    | G>   | B     | A    | C  | Tools & Accessories |                     |               |                 |
|---------------|-----|----|----|------|------|-------|------|----|---------------------|---------------------|---------------|-----------------|
|               |     |    |    |      |      |       |      |    | Head Type           | Containing Die Type | Indenter Type | Hexagon Die A/F |
| BM-C 25       | 85  | 47 | 16 | 6.5  | 12.0 | 20    | 4.0  | 11 | RHU 130             | MUA 35              | PS 130-35     | 13.8            |
| BM-C 35       | 85  | 47 | 16 | 8.5  | 12.0 | 20    | 4.0  | 11 | RHU 130             | MUA 35              | PS 130-35     | 13.8            |
| BM-C 50       | 91  | 50 | 20 | 9.5  | 14.8 | 24    | 5.0  | 13 | RHU 130             | MUA 95              | PS 130-95     | 17.9            |
| BM-C 70       | 91  | 50 | 20 | 11.0 | 14.8 | 24    | 5.0  | 13 | RHU 130             | MUA 95              | PS 130-95     | 17.9            |
| BM-C 95       | 91  | 50 | 20 | 12.5 | 14.8 | 24    | 5.0  | 13 | RHU 130             | MUA 95              | PS 130-95     | 17.9            |
| BM-C 120      | 115 | 60 | 25 | 13.7 | 18.8 | 30    | 6.0  | 13 | RHU 130             | MUA 150             | PS 130-150    | 22.0            |
| BM-C 150      | 115 | 60 | 25 | 15.5 | 18.8 | 30    | 6.0  | 13 | RHU 130             | MUA 150             | PS 130-150    | 22.0            |
| BM-C 185      | 118 | 60 | 32 | 17.0 | 23.8 | 35    | 7.0  | 13 | RHU 130             | MUA 240             | PS 130-240    | 27.5            |
| BM-C 240      | 118 | 60 | 32 | 19.5 | 23.8 | 35    | 7.0  | 13 | RHU 130             | MUA 240             | PS 130-240    | 27.5            |
| BM-C 300      | 160 | 93 | 40 | 23.3 | 28.0 | 36    | 7.5  | 17 | RHU 230             | MUA 500             | PS 240-500    | 35.0            |
| BM-C 400      | 160 | 93 | 40 | 26.0 | 28.0 | 36    | 7.5  | 17 | RHU 230             | MUA 500             | PS 240-500    | 35.0            |
| BM-C 500      | 200 | 94 | 47 | 29.1 | 36.8 | 60x60 | 10.0 | 17 | -                   | -                   | -             | 39.0            |
| BM-C 630      | 200 | 94 | 47 | 32.5 | 36.8 | 60x60 | 10.0 | 17 | -                   | -                   | -             | 39.0            |

\* All dimensions are based on French Standard: **Standard De France HN 68-S-90 & TNB-MALAYSIA**, other specification on request.

\* With approval from TNB Research (Certificate of Acceptance)

\* All dimensions in mm.



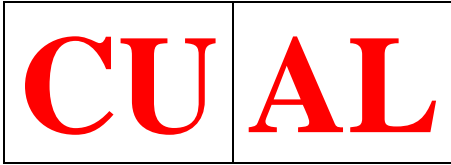
## CONWAY TERMINALS MANUFACTURER SDN. BHD.

(No. Syarikat 049613 U)

Lot 1298, Bukit Kemuning, Jalan Kampong Jawa, 42450 Klang, Selangor, Malaysia

Tel: +603-5122 1068/ 5122 1223 Fax: +603-5121 1109

Website: [www.conway.com.my](http://www.conway.com.my) Email: [ctm@conway.com.my](mailto:ctm@conway.com.my)



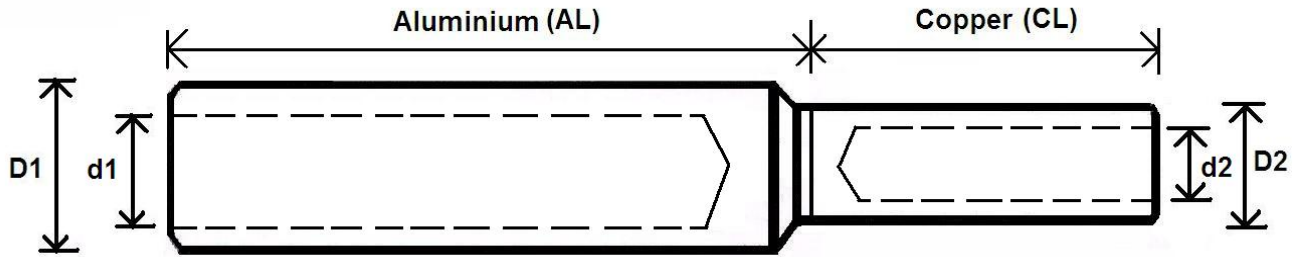
# Copper Aluminium Bi-Metal Link

Manufactured from Solid Aluminium and Solid Copper, Friction Welded

For Hexagon Die and Indent Die

Copper : E. Cu 99.9%

Aluminium: AL 99.5%



Pre-filled with jointing compound, plugged and individually labeled.

| Catalogue No. | Aluminium |      |      | Copper |      |      |
|---------------|-----------|------|------|--------|------|------|
|               | AL        | D1   | d1   | CL     | D2   | d2   |
| BM-L 35/25    | 50.0      | 16.0 | 8.0  | 22.0   | 9.3  | 7.0  |
| BM-L 50/35    | 57.0      | 20.0 | 9.0  | 24.0   | 10.8 | 8.4  |
| BM-L 70/50    | 57.0      | 20.0 | 11.0 | 26.0   | 12.5 | 9.5  |
| BM-L 95/70    | 57.0      | 20.0 | 12.5 | 28.0   | 14.4 | 11.2 |
| BM-L 120/95   | 72.0      | 25.0 | 13.7 | 31.0   | 17.5 | 13.5 |
| BM-L 150/120  | 72.0      | 25.0 | 15.5 | 33.0   | 20.0 | 15.6 |
| BM-L 185/150  | 78.0      | 32.0 | 17.0 | 38.5   | 22.0 | 16.8 |
| BM-L 240/185  | 78.0      | 32.0 | 19.5 | 40.0   | 24.0 | 19.0 |
| BM-L 300/240  | 120.0     | 40.0 | 23.3 | 54.0   | 27.9 | 21.5 |
| BM-L 400/300  | 120.0     | 40.0 | 26.0 | 58.0   | 31.8 | 24.4 |
| BM-L 500/400  | 120.0     | 47.0 | 29.1 | 65.0   | 34.4 | 26.7 |
| BM-L 630/500  | 120.0     | 47.0 | 32.5 | 70.0   | 38.6 | 30.0 |

\* All dimensions in mm.

\* Other dimensions on request



## CONWAY TERMINALS MANUFACTURER SDN. BHD.

(No. Syarikat 049613 U)

Lot 1298, Bukit Kemuning, Jalan Kampong Jawa, 42450 Klang, Selangor, Malaysia

Tel: +603-5122 1068/ 5122 1223 Fax: +603-5121 1109

Website: [www.conway.com.my](http://www.conway.com.my) Email: [ctm@conway.com.my](mailto:ctm@conway.com.my)

All dimensions and specifications are subject to change without notice

[MAIN MENU]